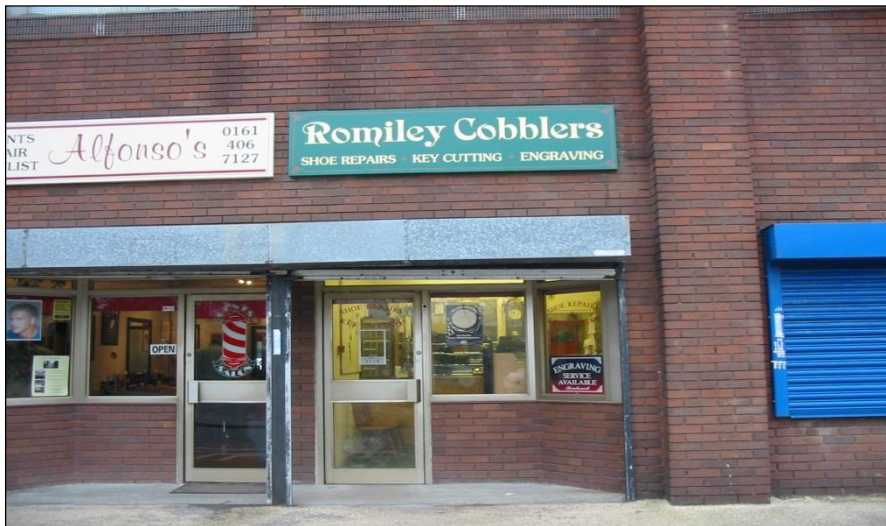




Kiosk Unit TO LET



15 THE PRECINCT, ROMILEY, STOCKPORT SK6 4EA

263 sq.ft. (24.46 sq.m.) approximately



Telephone: 0161-456 7689

LOCATION

The property is located at the rear of Romiley Precinct overlooking the main car park. Occupiers in the shopping centre include; Sainsbury's Local, Coral Bookmakers, Debra, other local independent retailers. Romiley is a suburban district of Stockport located to the east of the town centre.

DESCRIPTION

Self-contained retail premises. Features include: security shutters; intruder alarm; electric storage heaters.

ACCOMODATION

The accommodation briefly comprises:

Entrance/Reception Area		
Front sales area:	135 sqft (12.55sqm)	Approximately
Rear store area:	128 sqft (11.90 sqm)	Approximately
W.C. facilities		
Additional bin store area		
Net Floor Area	263 sqft (24.46 sqm)	Approximately

SERVICES

Mains electricity, including a three phase supply, water and drainage are available.

PLANNING

For confirmation concerning planning permission, interested parties should make their own enquiries with Stockport MBC.

BUSINESS RATES

Information regarding the business rates payable can be obtained from Stockport MBC non-domestic rates department on 0845 128 3934.

TERMS

The premises are available on a new lease. Full details are available on request.

RENTAL

£2,600 per annum, exclusive.

VIEWING ARRANGEMENTS

Further information on the property is available from: Nicholas Dignan MRICS
Tel: 0161 456 7689 Mobile: 07774 860 509 Email: nick@broadwoodstates.com

IMPORTANT NOTE

These details do not form a part of any contract. All prices and rentals quoted are exclusive of, but may be subject to, Value Added Tax.

Ref:Be665/2July2013

SUBJECT TO CONTRACT